
General AI Models in Service of Open Science –

What are the possibilities and limitations of the current EU copyright and data legislation to enable large-scale AI and data science research?

Teresa Nobre, Legal Director



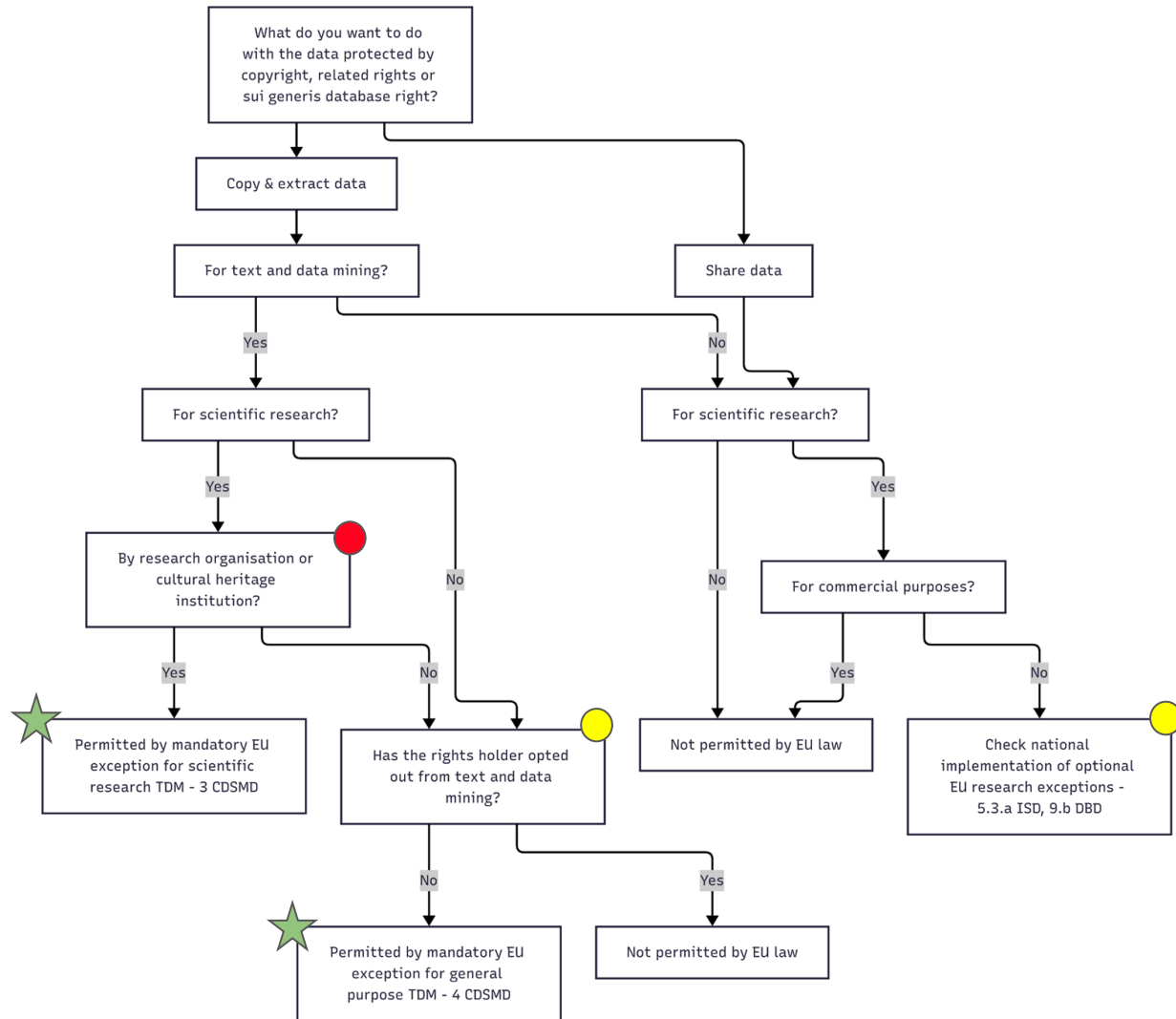
AI training data: legal frameworks

- Lawful access
 - Publicly and freely available
 - Open/commercial licenses
 - Data access rights
- Lawful use
 - Public Domain
 - Copyright exceptions (CDSMD, ISD, DBD)
 - Open/commercial licenses

Copyright framework: opportunities

- AI Act confirms that **TDM exceptions cover AI training**
- CDSMD harmonized rules for **copying & extract data for TDM**
 - By research orgs & CHI for scientific research (protected against contracts)
 - By anyone for any purposes (subject to opt-outs)
- Some MS allow **copying & sharing data for NC scientific research** (ISD, DBD)

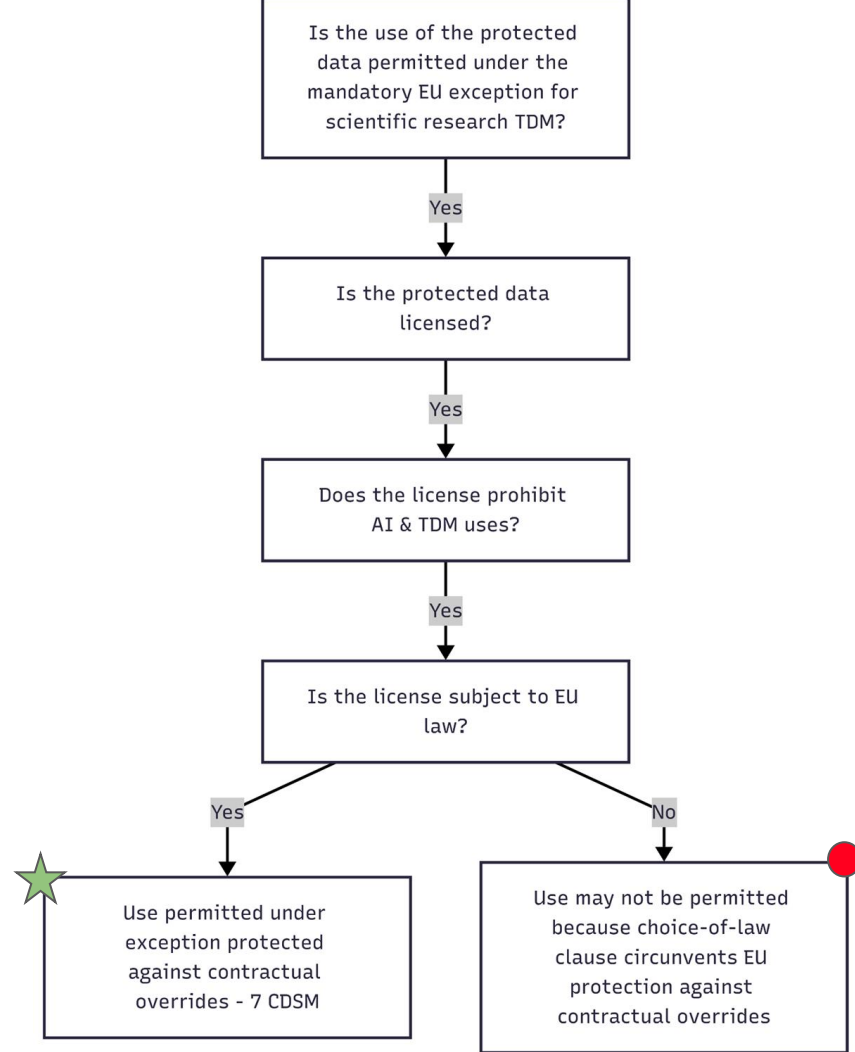
Copyright framework



Copyright framework: challenges

- **Copying and sharing data for NC scientific research** not protected across the EU
- **Public-private partnerships** not covered by harmonized exception for scientific research TDM
- **Contractual prohibitions and TPM restrictions** to TDM and AI
- **Making opt-outs effective:** standards; register; transparency; fair remuneration
- **Infringing AI outputs**

Contractual prohibitions to TDM and AI



Thank you!

